



THE WRENTIT

Founded 1904

Pasadena Audubon Society
A Chapter of National Audubon Society

Volume 56 – No. 3

To bring the excitement of birds to our community through birding, education
and the conservation of bird habitats.

May-June 2008

May Program

We've Got a Winner!

Wednesday, May 21, 2008

John Garrett

John has been participating since the age of 10 in the American Birding Association's competition for *Young Birder of the Year*. In 2007, in his final year of eligibility for the 10-13 age group, John took the Grand Prize. In addition to the congratulations and respect of his fellow birders, John gets a \$1000 scholarship toward a field ornithology camp and a pair of Leica Ultravid HD binoculars.

Come congratulate PAS's newest star and hear him relate his experiences in this competition. He will be showing photos, notebooks, illustrations, and essays that were used by the judges. There will be anecdotes, plans for the future (there's a 14-18 age group, too!), and time for question-and-answer.

For more details about the *Young Birder of the Year* competition, go to web site ABA.ORG/YB/YBY/INDEX.HTML

General Meetings held at:

Eaton Canyon Nature Center
1750 N. Altadena Drive, Pasadena
7:00 pm Social
7:30 pm Program

June Program

Pasadena Audubon Society Annual June Dinner and Celebration

Eaton Canyon Nature Center
1750 N. Altadena Drive, Pasadena,
California 91107

Saturday, June 14, 2008

6:00 pm to 9:00 pm

Tickets are \$20 per person

Save the Date! Join us on the patio for drinks and appetizers followed by a delicious dinner, catered by Luciano's, at the beautiful Eaton Canyon Nature Center. There will be plenty of time to visit with old friends and make new friends.

After dinner, we will be hosting the ever-popular slide show where you get an opportunity to show (show off?) your favorite photos. Simply choose your "Favorite Five Fotos" (animal, mineral or vegetable) and bring them on your thumb drive. Please keep the photo size to: 500X700 @ 72dpi. (or if you don't understand that, just keep it under 500 kilobytes in size).

RSVP before June 1, 2008 with:

1. No. of people attending;
2. Check payable to PAS for \$20 for each person attending;
3. Mail check to: Pasadena Audubon Society, c/o ENCA.

September Program

Bird Identification

Wednesday, September, 17, 2008

Mickey Long and Jon Fisher

Oh no! Another bird ID program? Well, yes, but this time with a twist. We'll look at a wide range of birds, so there will be something for everyone; from the slightly tricky to the very tricky and from common to rare. As long as the bird has been recorded in LA County, it's fair game.

In this presentation, we'll take some time to look at photos of several species and let the audience test their skills identifying them. Then we'll go back and work through the process of identifying each bird before moving on.

Everyone is encouraged to actively participate in identifying the photos and asking questions. As usual Jon and Mickey will share their insights, knowledge and ID tips. Bring your bird guides, binocs (they work well with the images) and your 'bird' brains... we'll see you there!



President's Perch

Birdwalks at the Huntington Gardens

The Huntington had asked PAS to lead six birdwalks for members as part of their "Smith On Wry" exhibit. In 1970, author Jack Smith notoriously claimed he saw a Common Grackle in his back yard, which led to his leading several popular bird-walks. Lois and I were asked to lead on April 16 and at 8:15 am we led a group of 12 Huntington members through the beautiful Desert Garden. Many of the cacti were in bloom and the tall Oaks, Sycamores and Palms attract the birds. We saw 40 species in the 1 3/4 hour walk,

including Red-crowned and Yellow-headed Parrots, Hooded and Bullock's Orioles, Allen's Hummingbirds and a Great Blue Heron – all crowd pleasers.

All participants were given a Bird List to help them continue birding on future visits and a PAS brochure to encourage them to join PAS.

Other "Smith On Wry" walks were led by PAS members Elaine MacPherson, Ron Cyger, Jon Feenstra, and Larry Allen.

Will

In this Issue

Arroyo Seco Survey Report	2
Birdathon	3
Field Trips	4
Calendar/Trip Leaders	5
Birding in South America	7
Magpie Group	7
Membership Application	7
Barbara Cohen Memorial	8
New Members	8

Conservation

Keeping an Eye on the Arroyo Seco Year One – 2007

[This article has been edited for space in this printed version. A more complete version of this article, including color illustrations and maps and a large appendix, is available on the Pasadena Audubon website at WWW.PASDENAAUDUBON.ORG.]

In early 2007, representatives from Pasadena Audubon, Audubon California’s Debs Park Center, and the Arroyo Seco Foundation got together in order to hash out a plan by which the long-term effects of development and recreation on the bird life in the parks of the Arroyo Seco watershed could be monitored. Within the urban floodplain of the Arroyo Seco as it drains from the San Gabriel Mountains and meets the Los Angeles River, the Hahamongna Watershed Park (Hahamongna) and the Lower Arroyo/ Brookside Park (Lower Arroyo) are popular locations serving the public of the western San Gabriel Valley and northeast Los Angeles (see Figure A [see page 3]). In addition to their human uses, they are also refuges of nature in an urban landscape, possessing a high percentage of native plant species and serving as a corridor for wildlife between the urban lowlands and the extensive wilderness of the San Gabriel Mountains.

Hahamongna is the more natural of the two parks, containing oak woodland mainly along its western edge, chaparral mostly in its northern and eastern portions, wetland and riparian areas in its central and southern areas (often flooded after rains), and several open weedy spaces. The Arroyo Seco riverbed runs through roughly the center in a natural sand and gravel river bottom. It is dry save after heavy winter rains. The Lower Arroyo is much more artificial with the Arroyo Seco confined to a concrete channel running through the center of the park. A well-worn trail parallels its edges and chaparral and oak woodland are largely limited to its steep canyon walls bounded by residential yards at the top. The northern part of the park near the 134 and Colorado Boulevard bridges contains some riparian habitat and small patches of wetland. Both parks support populations of the expected bird species for the area. Nothing is static, however, and the cities’ demands on their open space change. For example, the Hahamongna flood basin will probably soon serve as the site for a number of new athletic fields. Such is the tale of human

progress.

Since conversion into athletic fields is just one of many things that could/will happen to our local wild patches in the coming years, it is clear that a scientific endeavor is needed to study what effects changing usage of the land will have on the birds that live there. A plan for a long-term, multi-season bird census of both Hahamongna and the Lower Arroyo was initiated in February of 2007 and particular focus was drawn on four target “indicator” species: California Quail as an indicator of habitat continuity and disturbance, Oak Titmouse as an indicator of oak woodland, Yellow Warbler as an indicator of riparian habitat, and Spotted Towhee as an indicator of chaparral habitat. The monitoring protocol enacted entails a full bird count of each park performed multiple times each year with emphasis in spring when breeding birds are most actively displaying and defending territory. Separate point counts are also performed that can be used to determine species’ spatial range within each park. Seventeen points were assigned within Hahamongna and eighteen in the Lower Arroyo (see Figure A [in the website version]).

During 2007 from February to December, nine surveys were completed in Hahamongna and seven in the Lower Arroyo by volunteer biologists Larry Allen (LA), Judy Bass (JB), Lance Benner (LB), Ron Cyger (RC), Jon Feenstra (JF), and Jenny Jones (JJ). Each survey consisted of a complete bird census and full point count.

One hundred bird species were cumulatively tallied at Hahamongna including all four of the target species. Numbers of the target species recorded on each survey are shown in Table I. California Quail is particularly difficult to assess numerically as they can be secretive and often only a single bird of a flock is seen or heard even when others are probably present nearby. Yellow Warbler is the only target species that is migratory and its seasonal status in the area is well represented in the data (June – September). Numbers of Oak Titmouse, Yellow Warbler, and Spotted Towhee all show some fluctuations as a function of many variables (including observer, weather conditions, and seasonal activity) but most numbers hover around the average.

Breeding was probable for all target species with singing or calling territorial birds being the majority of detections. Yellow Warblers were present and singing throughout the breeding season. Confirmed breeding was noted only for Oak Titmouse when JF observed a family group of four on June 12.

	California Quail	Oak Titmouse	Yellow Warbler	Spotted Towhee
2/21/2007	0	7	0	12
3/12/2007	1	11	0	15
3/22/2007	0	14	0	10
3/30/2007	0	10	0	14
6/12/2007	16	8	7	20
6/23/2007	10	2	7	16
6/30/2007	1	7	7	17
9/21/2007	10	20	3	7
12/14/2007	0	8	0	23
Average	7.6	9.666667	6	14.88889

Table I. Hahamongna. Numbers of target species recorded during surveys. The numbers at the bottom of each column are averaged over sightings only.

Seventy-nine species were recorded in the Lower Arroyo/Brookside Park during the 2007 surveys. Table II displays the numbers of the target species detected during each survey. No California Quail were found on any surveys. Surveys during the Yellow Warbler breeding season were incomplete (no surveys were performed in the last weeks of June), so it’s not known if any remained in the park to breed or if the birds detected were simply migrants. The eleven birds recorded on the September 26 (post-breeding) survey are evidence of the numbers of them present during migration. Suitable riparian breeding habitat is present in the northern part of the park, however, so nesting is certainly possible. Oak Titmice and Spotted Towhees are probably regular breeders in their ideal habitat along the canyon walls, though the only confirmation of breeding of either was a family group of four Oak Titmice seen by JF on June 13.

	Oak Titmouse	Yellow Warbler	Spotted Towhee
2/22/2007	5	0	10
3/13/2007	5	0	9
3/23/2007	8	0	9
3/30/2007	1	0	5
6/13/2007	8	5	6
9/26/2007	2	11	11
12/13/2007	7	0	11
Average	5.125	8	8.375

Table II. Lower Arroyo. Numbers of target species recorded during surveys. The numbers at the bottom of each column are averaged over sightings only.

Figure B (in the website version) shows the cumulative distribution (point count data of where the species was recorded, summed over all surveys in 2007) of the target species within Hahamongna and the Lower Arroyo parks, respectively. Each species map doubles as an elegant map of the bird’s preferred habitat. Oak Titmouse and Yellow Warbler are the most restricted in their habitat preference being obligate breeders in oak woodland and riparian habitats, respectively. The presence of oaks and willows in each park is nicely traced by those species’ point count

(see Arroyo page 6, map page 3)

Pasadena Audubon Society
BIRDATHON 2008

Saturday, May 3, 2008 (Only one day this year)

Pasadena Audubon Society has two fundraising drives a year, the *BIRDATHON* in Spring and the Appeal in the Winter. The appeal is directed towards you as members of PAS, but *BIRDATHON* is geared towards others. *BIRDATHON* gives every member a chance to help non-birders become aware of birds and habitat. When they read about *BIRDATHON* in the paper or see it on the news, they can say "I supported." So, please, participate! Collect pledges (lots of small amounts work just as well as a few large pledges – that's our top money-producer John Garrett's strategy) and allow everyone to help PAS. Start getting your pledges now and after the *BIRDATHON*, give each of your sponsors a list of your total species. They'll love it and love the fact that they contributed to *BIRDATHON*'s success! In 2008, all Birdathon proceeds will be divided between Eaton Canyon Nature Center, the Audubon Center at Debs Park, and the Owens Valley Committee.

Turn in the form with pledge money you collect, along with your species list

BY JUNE 1, 2008 to:

Pasadena Audubon Society *BIRDATHON 2008*

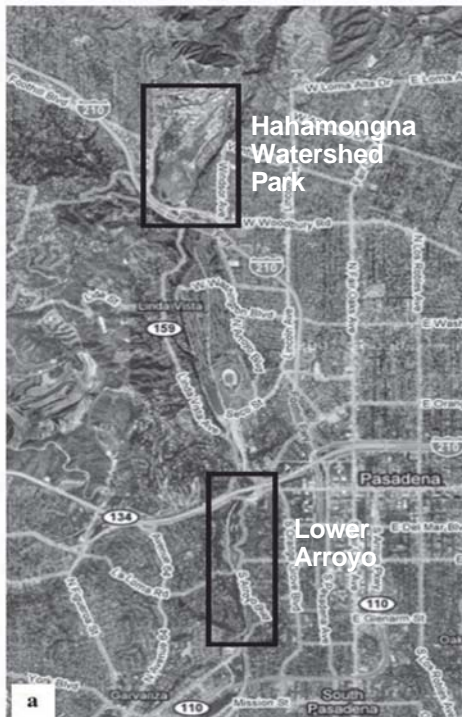
c/o Eaton Canyon Nature Center, 1750 N. Altadena Dr., Pasadena, CA 91107

Results will be announced at the Annual Dinner in June

Name: _____	Species Count: _____
Street Address: _____	Total \$ _____
City, State, Zip: _____	
Phone, Day: _____ Night: _____	
Chapter: _____ Pasadena Audubon Society	

Please print clearly – Make checks payable to: PASADENA AUDUBON SOCIETY

Sponsor's Name	Address	Phone Number	Pledge Per Species	Gift	Corporate Match?	Paid
TOTALS						



Arroyo Seco through Pasadena



Hahamongna Watershed Park



Lower Arroyo

Field Trips

Hahamongna Monthly Walk

Saturday, September 6, 2008
8:00 am – noon

This monthly bird walk is for birders of all ages and experience. A good variety of birds should be in residence. Bring binoculars, birding guide, water and wear walking shoes. No dogs.

Exit the north 210 at Berkshire and make a right, then a left at Oak Grove. The Hahamongna Watershed Park entrance is on the right at the next stop light. Take the first left after entering Hahamongna, and park by the ballfield

Ron Cyger

Mountain Birding Monthly Walk

Sunday, May 11, 2008
Sunday, June 8, 2008
Sunday, July 13, 2008
Sunday, August 10, 2008
Sunday, September 14, 2008
8:00 am – 10:00 am

This monthly walk ordinarily begins in the parking lot of Chilao Visitor Center, but occasionally the group will carpool to other nearby areas. Smell the pines and see higher-altitude species not common in Pasadena.

Dangerous driving conditions (chains required, storms, etc.) will cancel the outing. Chilao Visitor Center is located on State Highway 2 (Angeles Crest Highway), 27 miles north of La Cañada. For local conditions and information, call the Center at (626) 796-5541.

Hill Penfold

Eaton Canyon Monthly Walk

Sunday, May 18, 2008
Sunday, June 15, 2008
Sunday, July 20, 2008
Sunday, August 17, 2008
Sunday, September 21, 2008
8:00 am – 11:00 am

Pasadena Audubon and Eaton Canyon Nature Center are cosponsoring monthly walks at Eaton Canyon. The walks are led by Hill Penfold, who has been leading them at ECNC for many years. Hill is wonderful with birders of all levels and Eaton Canyon is one of the best locations to learn the birds of the Pasadena area.

The walks are held on the third Sunday of each month. Meet at the flagpole: bring water, binoculars, hats, *but no dogs*.

Hill Penfold

Huntington Library

Birdwalks (*PAS Members only*)

Sunday, May 25, 2008
8:00 am – 11:00 am
Sunday, June 22, 2008

Sunday, July 27, 2008
Sunday, August 24, 2008
7:00 am – 11:00 am
Sunday, September 28, 2008
8:00 am – 11:00 am

A special benefit for Pasadena Audubon Society members is the chance to bird the Huntington Library grounds. Attendance is by reservation only and limited to 15 participants. We thank our member and Huntington curator, Dan Lewis, for making these trips possible.

Contact Elaine by email (preferred) or phone, putting "Huntington" in the subject line to avoid inadvertent deletion.

Elaine MacPherson & Dan Lewis

Big Morongo

Saturday, May 17, 2008
7:30 am – ??

The desert oasis at Big Morongo Canyon is one of the ten largest cottonwood and willow riparian (stream) habitats in California. The upstream end of the canyon lies in the Mojave Desert, while its downstream portion opens into the Colorado Desert.

Big Morongo Canyon Preserve is an internationally-recognized birding site. Several rare or unusual species are known to nest here, and many other species are abundant during the spring and fall migration seasons.

Meet with Pasadena Audubon on Saturday, May 17, 2008 at 7:30 am to walk the easy paced trail in the preserve led by Kathi Ellsworth and Lance Benner. Bring lunch and lots of water. See you there!

Go east on Interstate 10, then north on Hwy 62 to Morongo Valley. Turn east on East Drive for one block to turn left at Preserve Sign (11055 East Drive). Park in the lot at the end of the lane. It usually takes about two hours to get to the preserve from Pasadena.

Kathi Ellsworth & Lance Benner

Owling in the San Gabriel Mountains

Saturday, June 7, 2008
6:00 pm – midnight

Six species of owls breed in the San Gabriel Mountains and spring is usually the best time to find them. This trip is scheduled when all the local montane species are present and actively vocalizing. We will start in the early evening before sunset when we'll look for Northern Pygmy Owl and diurnal montane species, and then after dark we'll look for Flammulated, Northern Saw-whet, Western Screech, and Great Horned Owls. If we're extremely lucky, we might find Spotted Owl. We will also look for Common Poorwill. Limited to 12 people.

Please email or call Lance to reserve a spot and for directions on where to meet.

Lance Benner

Buckhorn Campground, San Gabriel Mountains

Saturday, June 21, 2008
8:00 am – ??

At an elevation of 6,300 feet, Buckhorn Campground is a beautiful and comfortable retreat from the hot, smoggy valleys below. There is a small shaded stream, tall evergreens of several varieties, and some open dry slopes. This is an excellent mixture for montane species, including several species of woodpeckers, nuthatches, and flycatchers, Cassin's and Purple Finches, Green-tailed Towhees, Fox Sparrows, and MacGillivray's Warblers. Occasionally other mountain birds, such as Brown Creepers and Pine Siskins, may be found.

From Interstate 210, go north (right) on Angeles Crest Highway, State Route 2, about 34 miles. The campground entrance is about one mile past Cloudburst Summit, at mile marker 58.3. Proceed through the campground, following signs for the Burkhart Trail. A Forest Adventure Pass is required to park in the trailhead lot, where we'll meet. Allow a least 1 hour and 15 minutes for the drive from Pasadena.

Ed Stonick

Mt. Piños and Environs

Saturday, June 28, 2008
7:30 am – early afternoon

Mt. Piños is one of the best places in Southern California to enjoy a wide variety of montane birds. Several species of warblers, thrushes, raptors, woodpeckers, flycatchers and finches are usually abundant and easy to find. Williamson's Sapsucker, Calliope Hummingbirds and Hermit Warblers are target species. We will visit Irish Meadows and several other areas where the birding is usually reliable.

Take the Golden State Freeway (I-5) north to the Frasier Park turnoff and continue west for about 5 miles to the small city park in Frazier Park on your left. We will meet at the park. Don't forget lunch, water and sunblock.

Larry Johnson and Ron Cyger

Big Santa Anita Canyon

Saturday, July 5, 2008
6:00 am – 10:00 pm

Join us for a pleasant evening hike into Big Santa Anita Canyon on the edge of the San Gabriel Mountains above Arcadia. We will hike up to Sturtevant Falls to look for diurnal species while it's still light and to look for Black Swifts arriving to roost at dusk. On the way back we'll look for owls, poorwills, and glow

(see Trips page 6)

Calendar

Submit material for the next Wrentit by August 1st

May 2008

Date	Day	Time	Event	Location	Leader*
3	Sat	All Day	BIRDATHON	Your choice	Will Fulmer
7	Wed	7:30 pm	Board Meeting	Eaton Canyon Nature Center	Will Fulmer
11	Sun	8:00 am	Field Trip	Mountain Birding Monthly Walk	Hill Penfold
17	Sat	8:00 am	Field Trip	Big Morongo Canyon	Kathi Ellsworth
18	Sun	8:00 am	Field Trip	Eaton Canyon Nature Center	Hill Penfold
20	Tue	9:00 am	Magpie Study Group	Lower Arroyo	Madeline West & Sid Heyman
21	Wed	7:00 pm	General Meeting	Eaton Canyon Nature Center	Program: John Garrett, YBofYear
25	Sun	8:00 am	Field Trip	Huntington Library Gardens	Elaine MacPherson & Dan Lewis

(PAS Members Only)

June 2008

7	Sat	6:00 pm	Field Trip	San Gabriel Mountains	Lance Benner
8	Sun	8:00 am	Field Trip	Mountain Birding Monthly Walk	Hill Penfold
14	Sat	6:00 pm	Annual Dinner	Eaton Canyon Nature Center	Susan Gilliland, Judy Bass, Pam Dong
15	Sun	8:00 am	Field Trip	Eaton Canyon Nature Center	Hill Penfold
17	Tue	9:00 am	Magpie Study Group	Peck Road Park	Madeline West & Sid Heyman
21	Sat	8:00 am	Field Trip	Buckhorn Campground	Ed Stonick
22	Sun	7:00 am	Field Trip	Huntington Library Gardens	Elaine MacPherson & Dan Lewis

(PAS Members Only)

28 Sat 7:30 am Field Trip Mt. Piños Larry Johnson & Ron Cyger

July 2008

5	Sat	6:00 pm	Field Trip	Big Santa Anita Canyon	Lance Benner
12	Sat	8:00 am	Beginning Bird Class	Eaton Canyon Nature Center	Ron Cyger, Mark Scheel
13	Sun	8:00 am	Field Trip	Mountain Birding Monthly Walk	Hill Penfold
19	Sat	8:00 am	Field Trip	Throop Peak	Ed Stonick
20	Sun	8:00 am	Field Trip	Eaton Canyon Nature Center	Hill Penfold
27	Sun	7:00 am	Field Trip	Huntington Library Gardens	Elaine MacPherson & Dan Lewis

(PAS Members Only)

August 2008

2	Sat	7:00 am	Field Trip	Piute Ponds	Jon Feenstra
8-10	F-Su	All Day	Field Trip	Southeast Arizona	Tom Ryan
10	Sun	8:00 am	Field Trip	Mountain Birding Monthly Walk	Hill Penfold
17	Sun	8:00 am	Field Trip	Eaton Canyon Nature Center	Hill Penfold
24	Sun	7:00 am	Field Trip	Huntington Library Gardens	Elaine MacPherson & Dan Lewis

(PAS Members Only)

September 2008

3	Wed	7:30 pm	Board Meeting	Eaton Canyon Nature Center	Ron Cyger
6	Sat	8:00 am	Field Trip	Hahamongna	
13	Sat	7:30 am	Field Trip	Point Vicente Sea Watch	Mike San Miguel
14	Sun	8:00 am	Field Trip	Mountain Birding Monthly Walk	Hill Penfold
17	Wed	7:00 pm	General Meeting	Eaton Canyon Nature Center	Program: Jon Fischer & Mickey Long
21	Sun	8:00 am	Field Trip	Eaton Canyon Nature Center	Hill Penfold
28	Sun	8:00 am	Field Trip	Huntington Library Gardens	Elaine MacPherson & Dan Lewis

(PAS Members Only)

***Trip Leader Information**

Mark Scheel (Chair)	(818) 366-7343	scheel@tapir.caltech.edu
Larry Allen	(626) 288-2701	larryallen@earlymusicla.org
Lance Benner	(626) 791-1187	lbenner@charter.net
Ron Cyger	(626) 449-3625 (before 9 pm)	ron@cyger.org (preferred)
Kathi Ellsworth	(626) 564-0652	pandionsky@yahoo.com
Jon Feenstra		feenstra@alumni.caltech.edu
Jon Fisher	(818) 800-2776	JonF60@hotmail.com
Nick & Mary Freeman	(818) 247-6172	mnfreeman@earthlink.net
Sid Heyman	(626) 571-5991	
Dan Lewis	(626) 398-4805	danolewis@earthlink.net
Mickey Long	(626) 398-5420	mlongbird@charter.net
Elaine MacPherson	(626) 355-9412	birdergrrl@aol.com
Hill Penfold	(818) 352-4954	hpenfold@gmail.com
Tom Ryan		tryan@swca.com
Mike San Miguel	(626) 355-5058	sanmigbird@aol.com
Ed Stonick	(626) 796-0595	edstonick@earthlink.net
Madeline West	(626) 574-0429	west226@adelphia.net

Arroyo (continued)

distributions. Spotted Towhees show the widest distribution, not necessarily bound to strict chaparral – shown clearly by their presence at nearly every point in Hahamongna. Oak woodlands and brushy areas overlap considerably in the Lower Arroyo and the coincidental presence of Oak Titmice and Spotted Towhees at most points reflects this.

In addition to the target species, other bird species are known to breed in the suitable habitat present within each of the parks. At Hahamongna on February 21 JF observed a pair of Red-tailed Hawks copulating. On March 12 he observed presumably the same pair copulating and carrying nesting material. He also watched a pair of White-tailed Kites courting in the weedy open area near the center of the flood basin. On June 12, JF observed a pair of Western Bluebirds carrying food to young in a nest box. He also saw juvenile Song Sparrows, Black-headed Grosbeaks, and a Brown-headed Cowbird. On June 23, LA found four recently fledged Cooper's Hawks, two of which were still hanging around on June 30. A Spotted Sandpiper seen by LA on June 30 is intriguing as this species has very few breeding records in the county. In the Lower Arroyo on June 13, JF saw a fledgling Red-shouldered Hawk and a juvenile American Robin. A pair of Great Horned Owls were sitting near a nest under the San Rafael Avenue bridge. Nests of Cliff Swallows were under both the San Rafael Avenue bridge and the La Loma Avenue bridge. White-throated Swifts were entering cracks in the 134 freeway bridge presumably attending nests. A Nuttall's Woodpecker was seen feeding young at a nest hole. A Western Scrub-Jay was feeding a recently fledged juvenile. And a four-member Black Phoebe family group was seen foraging.

The total number of species recorded during surveys of the Lower Arroyo and Hahamongna differ quite markedly, seventy-nine and one hundred, respectively. Relying solely on descriptions of the parks these numbers may seem unusual as both areas possess a very similar mix of habitats. However, a cursory glance in the field reveals that the Lower Arroyo has much smaller habitat areas (particularly wetland and weedy open space) than Hahamongna. Clear and expected absences on the Lower Arroyo List (see Appendix) are of species which prefer those habitats: waterfowl, some raptors, shorebirds, and blackbirds. Furthermore, the Lower Arroyo has greater recreational infrastructure and consequently more people there utilizing those facilities. Well worn trails fragment

every part of the park – many used by walkers and illegally off-leash dogs. Archery ranges line the west side of the canyon. The heavy traffic, plus fragmentation of the park and the lack of connectivity with the more natural areas present upstream (like Hahamongna and the San Gabriel Mountains) are likely the major contributors to the absence of California Quail from the Lower Arroyo.

Hahamongna, possessing more native and less disturbed habitat, has absences (or lower numbers) of species that either are obligate to residential/decorative woodland or have adapted well and thrive in such environs. The clearest examples of such species are exotics like Yellow-chevrons Parakeet and Red-whiskered Bulbul, both of which were recorded multiple times in the Lower Arroyo but were not recorded even once at Hahamongna. Cedar Waxwings, a flocking bird that feeds on fruit, were seen more times and in greater numbers in the Lower Arroyo. More subtly, Golden-crowned Sparrows eschew the sparser more arid chaparral of Hahamongna for the more lush tangles of exotic vegetation spilling from the residential backyards down into the Lower Arroyo.

In this first year of monitoring, some interesting facts have come to light. The status of chosen habitat indicator species has been correlated to the physical attributes of each park. As those physical attributes change due to human usage and the short-term and long-term variations in climate so will the ecology of the parks. 2007 was the driest year on record, and though the data from this year alone has provided us with some thought-provoking conclusions, the data in greater temporal context will tell us more – trends in overall species diversity, population, and status. It is hoped that as this study matures more data can be acquired during each survey. Taking advantage of technological advances (especially regarding field-accessible GIS computers) could allow researchers to further detail the spatial distributions of birds and habitats and perhaps extend to all bird species what was done for only four in this first year.

Jon Feenstra

Elections in May

Nominations for officers of Pasadena Audubon Society will be made at the general meeting on April 16th. Voting for officers will take place at the general meeting on May 21. All members of PAS are eligible to serve as officers. Terms last for one year. Bev McKenzie is Chair.

Trips (continued)

worms. Other possible species: American Dipper, Purple Finch, Olive-sided Flycatcher, Hutton's Vireo, and Canyon Wren.

Take 210 to Santa Anita Avenue, exit, go to the top of Santa Anita, past the gate, and up to the parking lot at Chantry Flats (about 3.5 miles above the edge of Arcadia). An "Adventure Pass" is required to park. We will meet in the lower parking lot at the gate.

Bring water, food, lights, bug repellent, a jacket, and sturdy shoes. It's a four-mile hike to the waterfall and back with a steep 1/2 mile climb at the end, so our pace will be leisurely.

Lance Benner

Piute Ponds

Saturday, August 2, 2008
7:00 am-2:00 pm

Join us for a day at Piute Ponds and other hot spots in the Antelope Valley. Fall shorebird migration is underway, and the Ponds host an impressive assortment of shorebirds, waterfowl, and marsh dwellers, as well as desert species. It will be hot; bring plenty of water, food, and a scope if you have it. Note: The Piute Ponds are located on Edwards Air Force Base, which has restricted entry. Participants limited to 12; email trip leader to sign up.

Jon Feenstra

Southeast Arizona Throop's Peak

The field trips to Southeast Arizona and to Throop's Peak, listed in our calendar, had not been finalized at press time. As these dates draw closer, please check the Pasadena Audubon website (www.pasadenaudubon.org) for the most current information, or contact the trip leaders directly.



Saturday, May 3, 2008

Touring And Birding In Southern South America

In late February, Will and I went on a tour through Chile, Argentina and Brazil, visiting cities, national parks, and ranches, and crossing the Andes by boat! Stops included Santiago and the nearby wine country; the lakes region of Patagonia; Buenos Aires and a nearby ranch; Iguazu Falls; and Rio de Janeiro. It was a great two weeks, and we saw quite a few birds, even though this was not a bird trip.

The Southern Lapwing, a big, noisy member of the plover family, was almost everywhere. Another frequently seen bird was the Chimango Caracara.

Although they're raptors, the Chimangos seem to spend a good part of their time poking around the ground. These two birds strolled the lawns and golf course at Llao Llao Resort in Argentinean Patagonia, along with Ashy-headed Geese and Black-faced Ibis.

The Rufous Hornero (or Ovenbird), Argentina's national bird, frequented the city parks of Buenos Aires. And as we drove out of town, every other telephone pole seemed to have a hornero mud nest – shaped like a clay oven, with two com-



Southern Lapwing



Chimango Caracara

partments, we were told.

Visiting Iguazu Falls was a high point of the trip — hundreds of falls with an unbelievable amount of water. Black Vultures soared above them, and Great Dusky Swifts nested behind them.

Butterflies and rainbows abounded in the mist. Our park-like hotel grounds provided habitat for Black-throated Mangos (hummingbirds have such interesting names), Plush-crested Jays (who look like they're wearing berets), and Guira Cuckoos (who resemble road-

runners). About 50 Brown Chested Swallows perched on a TV antenna in the evening, and a not-very-shy

Burrowing Owl had a permanent spot on the fence surrounding the swimming pool!

Even Rio had some great birds (some might say magnificent). Soaring above Copacabana Beach and up on Corcovado with its huge statue of Christ the Redeemer were dozens of Magnificent Frigatebirds, along with the ever-present Black Vultures.

All in all, it was a wonderful trip, and we added 31 birds to our life list.

Lois Fulmer

Magpie Bird Study Group



The group meets the third Tuesday of each month. We bird 9:00 am to about 11:30 am, eat sack lunches and have a short business meeting. *All PAS members welcome.*

Tuesday, May 20, 2008
Lower Arroyo

Meet at the casting pond.

Tuesday, June 17, 2008
Descanso Gardens

Meet at the entrance.

Tuesday, September 16, 2008
To Be Determined

*Sid Heyman
Madeline West*

Thank You For Your Donations To PAS

Several PAS members have made donations to our chapter between February and April, 2008. Our thanks go to: **Jack Bath, Lance Benner, Beth Gertmenian, Lew Hastings, Don and Scarlett Hibner, Audrey Parmiter, Madeline West and Joan Zukoski.**

Become a Chapter-only Member of PAS

Policy changes by the National Audubon Society have severely reduced the share of NAS membership dues returned to local chapters, funds which Pasadena Audubon has used to finance its programs and services. To make up for the loss of funds from National Audubon, Pasadena Audubon, like many other National Audubon chapters, now offers *Chapter only* memberships.

When it's time to renew your National Audubon membership, we invite you to instead become a *Chapter only* Member of the Pasadena Audubon Society, or make a donation to our Chapter to support our programs. Chapter-only dues are \$20 per year, or \$15 for seniors and students, all of which remains with our local chapter to fund our programs, including publication of *The Wrenit*.

We thank you all for your support!

Membership Application

Name _____
Address _____
City _____
State _____ Zip Code _____ Phone _____

Email _____

Donor's address for gift membership:

Name _____
Address _____
City _____ State _____ Zip Code _____

Yearly Membership for Individual or Family

PAS Chapter Only [] \$20 [] \$35* [] Other _____

** Plus Chapter Pin and Tee Shirt or PAS Birding Guide*

[] \$15 Senior/Full-time Student

Donation [] _____

Make checks payable and mail to:

Pasadena Audubon Society, 1750 N. Altadena Drive, Pasadena, CA 91107

Barbara Cohen Memorial Service

Saturday, May 24, at 10:00 am

Barbara Cohen, longtime Arboretum bird walk leader, PAS member, and CBC participant, passed away March 31, 2008. A memorial service for Barbara will be held Saturday, May 24, at 10:00 am in Kallam Garden at the Arboretum in Arcadia.

The Arboretum would like to have a list of names of those planning to attend to facilitate their entry through a separate entrance, as well as to get an idea of the number of people who will be gathering at Kallam Garden. Tram service will be provided for those requiring transportation from the main entrance to Kallam Garden.

You can e-mail this info to Audrey Foran at FORANAUDREY@AOL.COM or phone her at 626-281-3245, and she will relay it to Barbara's husband, Arthur. It is advisable to arrive at the Arboretum by 9:30 to reach Kallam Garden before ten o'clock.



New Members

PAS is pleased to welcome the following new members. We hope you will get involved in our many activities.

ALHAMBRA: Mr. & Mrs. Mel Doering, Patrician Donegan; **ALTA-DENA:** John Bennett, Ulysses Coe, Lawrence Fusha, Carolyn Howe, Marina Jimenez, Nancy Power, Verna Wefald; **ARCADIA:** Russell Allen, Judson Morris, Marian Carson, Virginia Chipp, Pamela Greene, Beverly Harris, Basil

Johnson, Ron Robinson, Douglas Schinke, Stephanie Yanchinski; **AZUSA:** Marjorie Collins, Floyd Cook, Mary Sachs; **CHINO:** Jack Bath; **DUARTE:** Jerry Katz; **LA CAÑADA-FLINTRIDGE:** Allan Anderson, Hal & Carole Beesley, Mary Ruth Dicks, Kay Fleming, Charles Gulick, Elaine Hurd, Carol Lynch; **MONROVIA:** Bertilla Howe, Roy Ross; **MONTEREY PARK:** E. Bojorquez, Nancy Thompson; **PASADENA:** Terry Allison, L. Elizabeth Bertani, Miles Crawford, Klaus Fehrmann, Genette Foster, Kelvin Fujiuchi, John Gilchrist,

Beth Gray, Gary Hughes, Dolores Kroop, Thomas & Cynthia Lake, A. Livieson, J. Marshall, Bryce Nelson, Lorna Nelson, Anthony Okeefe, Gerald Orcholski, Pamela Reynolds, Michael Ryan, Peter Zabriskie; **SAN GABRIEL:** Henry Fan, Liz Lee, Dagmar Salzle, Margaret Shifley, John Sloan; **SAN MARINO:** Nancy Chalifour, Lilan Fan, Charles Marshall, Kwang Yu; **SIERRA MADRE:** Beth Thomas, Pearl Tyree; **SOUTH PASADENA:** Natalie Alleva, Wayne Jones; **TEMPLE CITY:** Mary Lanigan, June Mutter.

Pasadena Audubon Society Board

President	Will Fulmer	(626) 798-1606
Vice President	Norm Arnheim	(626) 405-0844
Secretary	Kathi Ellsworth	(626) 524-0652
Treasurer	Peggy Ogata	(626) 398-3184

Board Members at Large:

Dan Lewis, Brian Tomikawa, Bev McKenzie		
Auditor	Eileen Burton	(626) 585-9076
Conservation	Laura Garrett	(626) 564-1890
Field Trips	Mark Scheel	(626) 355-3938
Hospitality	Judy Bass	(626) 798-7442
	Pam Dong	(626) 799-2232
	Susan Gilliland	(626) 441-8487
Programs	Ron Cyger	(626) 449-3625
Magpie Bird Study Group	Madeline West	(626) 574-0429
	Sid Heyman	(626) 571-5991

Membership	Lois Fulmer	(626) 798-1606
Publicity	(open)	
Website	Janet Scheel	(626) 355-3938
Youth Education	Norm Arnheim	(626) 405-0844
Youth Representative	John Garrett	(626) 564-1890

The Wrentit is published by the Pasadena Audubon Society
1750 N. Altadena Dr., Pasadena, CA, 91107
WWW.PASADENAAUDUBON.ORG

Editor	Mark Hunter	(818) 957-5044
Desktop Publishing	Donald G. Rogers	(626) 286-2546
Printing	Pasadena Print Stop	(626) 577-0510
<i>Wrentit</i> Mailing	Alex Strong	(626) 799-3364

Pasadena Audubon Society Chapter only—\$20. *Wrentit* subscription only—1 year \$10. National Audubon Society membership fees—\$35. National members receive *Audubon* magazine and *The Wrentit*. Messages or queries for Pasadena Audubon may be left at (626) 355-9412. For change of NAS address call: (800) 274-4201.

Pasadena Audubon Society

1750 N. Altadena Drive
Pasadena, CA 91107

DATED MATERIAL

Non-profit Organization
U.S. Postage
PAID
No. 1880
Pasadena, CA



Printed on
50% recycled paper